

Neurotone Keypad

The Neurotone Keypad is intended to be used in conjunction with the LACE Clinic Edition Training Program. The Neurotone Keypad is designed for ease of connection and use. The Keypad connects to a computer via USB. USB Keypad drivers must be installed for LACE CE to recognize the keypad.

1. System Requirements

Currently, the keypad driver, version 5.4.29 or higher only works on the following versions of Windows:

- Windows XP, Windows Vista, Windows 7

Before you get started, make sure you have the following items (they have been included in your LACE CE package):

1. LACE Keypad
2. USB cable
3. Driver CD
4. LACE Clinic Edition v4.0.5 or higher



2. Driver Installation - Windows XP, Windows Vista and Windows 7

Before connecting the keypad make sure that you have completed the driver installation.

Any previous version of the driver, such as version 4.40, must be uninstalled before starting installation of the current driver.

To uninstall a previous version:

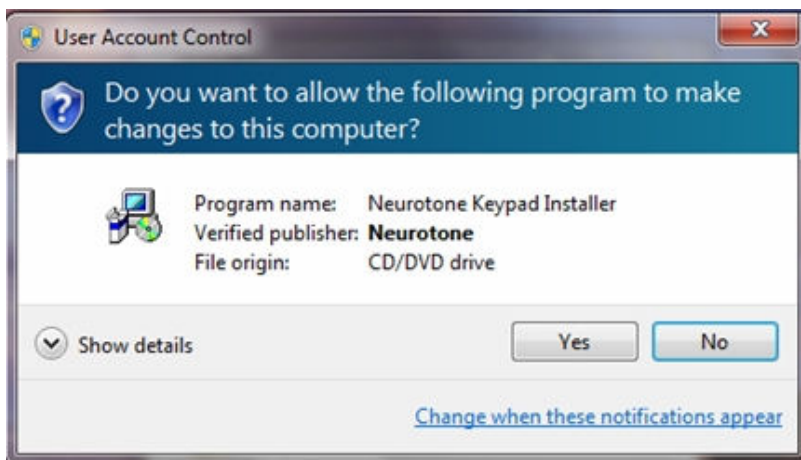
1. From the “Start” menu go to the “Settings” → “Control Panels”.
2. Select “Add or Remove Programs” or “Programs and Features”
3. After the list of programs populates, select “Neurotone Keypad Driver” and start the uninstallation.
4. After the uninstall process successfully completes, you may be asked to restart your computer. Please do so.

You may now continue to the installation of the current version of the driver.

The driver installation process is described as follows:

1. Make sure your computer is turned on and finished with its start up process.
2. Insert the driver CD. The CD will automatically run and start the installation process. This will take 10 to 15 seconds.

The first screen you will see is this.



Please press “Yes”.

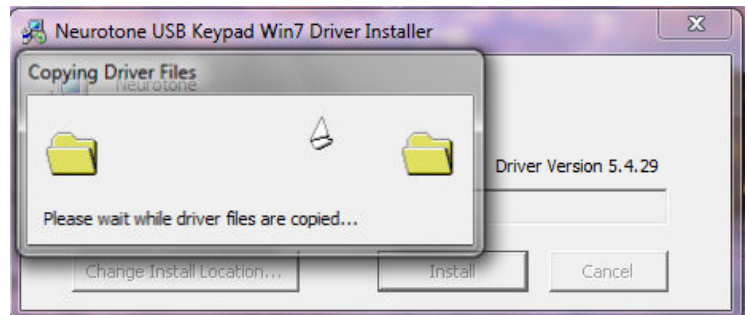
You will next see the following screen:



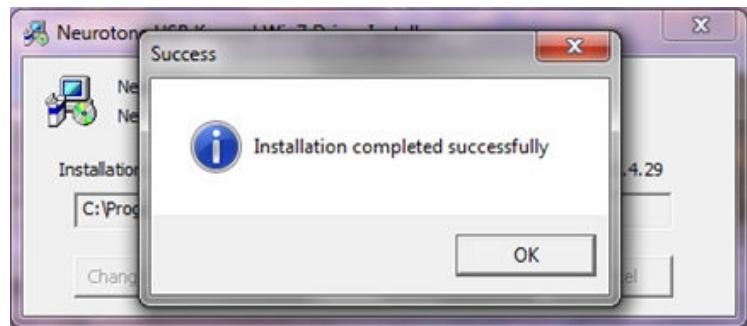
Upon seeing this screen, you may select the location where the driver files are to be installed. The default installation directory is C:\Program Files\Neurotone\Keypad. Use the “Browse” button if you will to select a different installation directory. When directory selection is complete, press the “Install” button. The driver installation will now start.

At this point the installer will copy files into the correct directories and make the appropriate registrations to the OS. During this process you will see the following windows.

You will then be presented with the installation successful indication. You may now remove the driver CD from the computer.



Now plug in the USB cable to both the Neurotone Keypad Controller and the computer. The computer will recognize the new USB hardware, associate it with correct driver and the computer will play the ascending device found sound. The light in the “Options / ON” button will now flash. You are now ready to start the LACE Clinic Edition.



3. Operation

Actual operation of the controller is straight forward and intuitive. The layout of the physical keys corresponds directly to the layout of the on-screen buttons. Pressing a key on the controller actuates the same function as the on-screen button.

Always have the controller connected before starting the LACE application. If the controller is not connected before the LACE application is started then the controller will not be recognized. To have the controller recognized, the LACE application will need to be exited and then connect the controller before restarting the LACE application.

Do not disconnect the controller from the computer during the LACE Training. If the controller becomes disconnected, it will be necessary to restart the LACE Training application to have the controller be recognized.

When the controller is plugged into the USB of the computer the indicator in the “Menu” button will start flashing. The flashing will continue until the LACE application has completed its startup process.

Once the LACE application has completed its startup process the lighted indicators in the “Menu” button will stop flashing and the indicators in the buttons will illuminate to match the on-screen buttons. As with the on-screen buttons, the illuminated buttons indicate that valid buttons during a specific sequence of the LACE Training. The controller will directly mirror the indicators and actions of the on-screen controls.