

Instructions For Downloading LACE (requires valid LACE registration code)

1. Go to: www.neurotone.com/laceinstall
2. Choose the appropriate download for your operating system (Windows)

You are here: [Home](#) » LACE Home Edition Download

Use the links below to download the full LACE Home Edition (HE) installation file for your operating system.

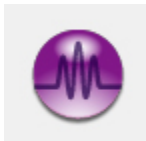
Please note: If you do not already have one, you will need a valid LACE registration code to activate your LACE software. Need a registration code? Order now in our [web store](#).



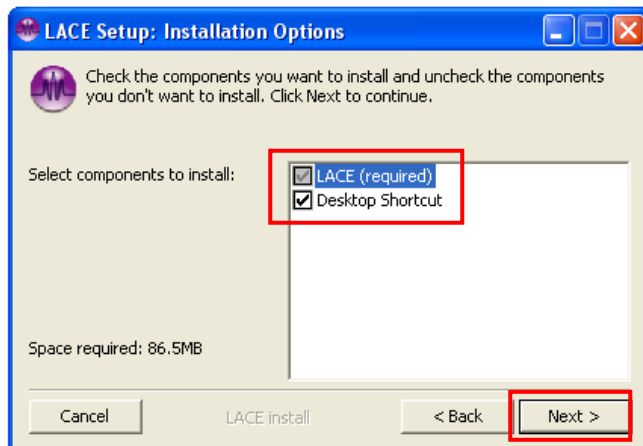
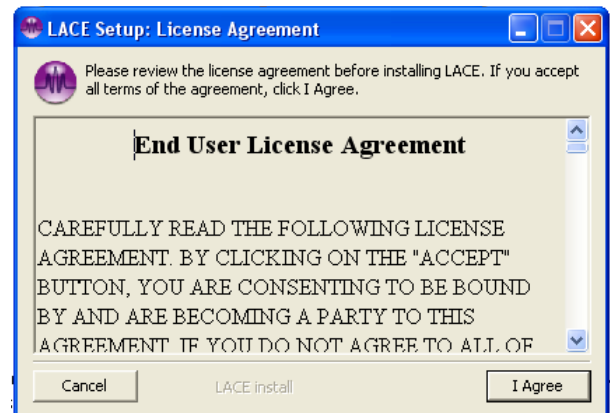
WINDOWS

DOWNLOAD LACE HOME EDITION (HE) FOR WINDOWS
REQUIRES WINDOWS 7, VISTA OR XP
VERSION: 4.0.1 | FILE SIZE: 124MB

Locate the downloaded file and double-click it to start installation:



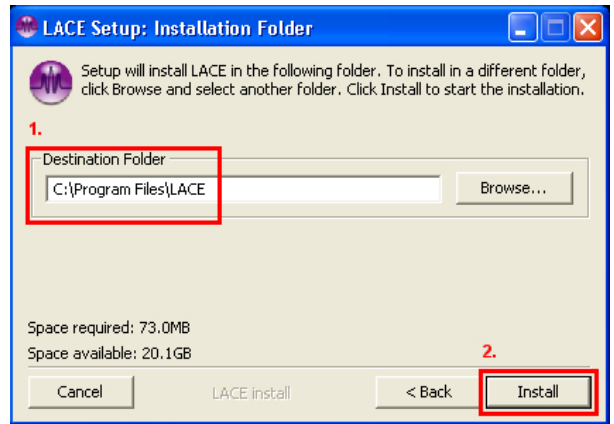
The very first screen of the LACE Setup process contains a license agreement. Be sure to read the agreement before proceeding. If you accept all terms of the agreement, click the I Agree button. (You won't be able to use LACE if you do not accept these conditions.)



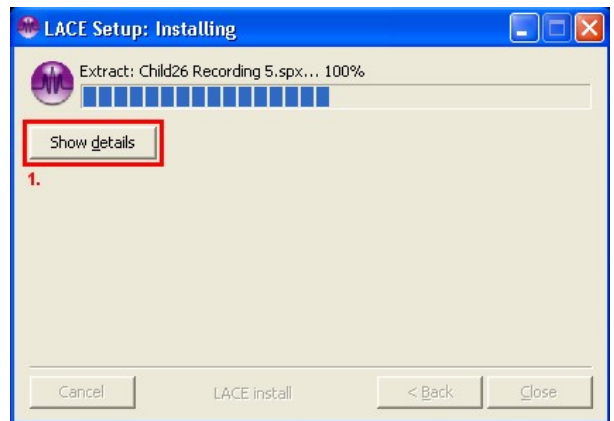
This next screen will allow you to decide which components you wish to install. Each item has a box adjacent to it [1.]; if the box is not checked, its corresponding item will not be part of the installation.

You'll notice that the option "LACE (required)" is grayed out; these are the indispensable core elements of the software and cannot be unchecked. "Start Menu Shortcuts" and "Desktop Shortcut," however, are optional, though we highly recommend that you do install these shortcuts for ease of use. When you have finished with your selection, click the "Next" button [2.] to continue forward.

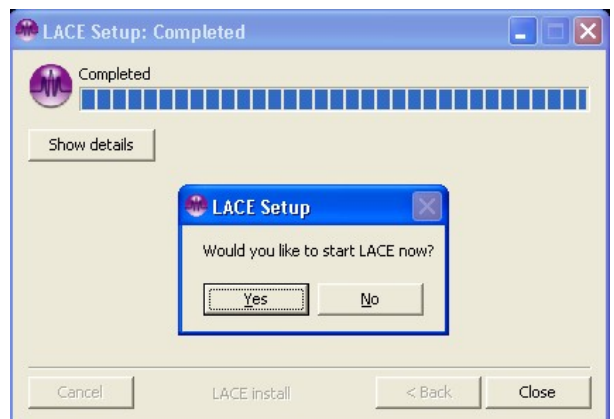
The final screen, prior to actual installation, will allow you to choose the Destination Folder for software extraction. The input field [1.] will already contain a default folder (C:\Program Files\LACE). It is highly recommended that you use the default folder. Clicking Install [2.] will begin the extraction of the software to this folder.



At this point, the software will be copied to your hard drive. The Setup window will track the progress of installation until it is completed. If at any point during this process you wish to view details of the extraction, simply click on the Show Details button [1.].



When the extraction is completed, you will be prompted with a box asking whether or not you would like to open the program you just installed. If you select YES, the LACE software will launch. If you select NO, you will be returned to your desktop and may use the software, at any time, by way of the shortcut on the desktop or in the Start menu.



You have successfully installed LACE Auditory Training software.